

LS OF BEAM PB1 (9"x15")

Note: Provide T8@6"C/C-2Leg IC18 - IC20

LS OF BEAM PB2 (9"x15")

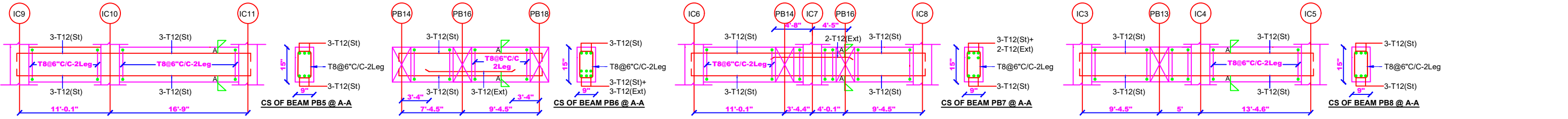
Note: Provide T8@6"C/C-2Leg IC15 - IC17

LS OF BEAM PB3 (9"x15")

Note: Provide T8@6"C/C-2Leg PB14 - PB18

LS OF BEAM PB4 (9"x15")

Note: Provide T8@6"C/C-2Leg IC12 - IC14



LS OF BEAM PB5 (9"x15")

Note: Provide T8@6"C/C-2Leg IC9 - IC11

LS OF BEAM PB6 (9"x15")

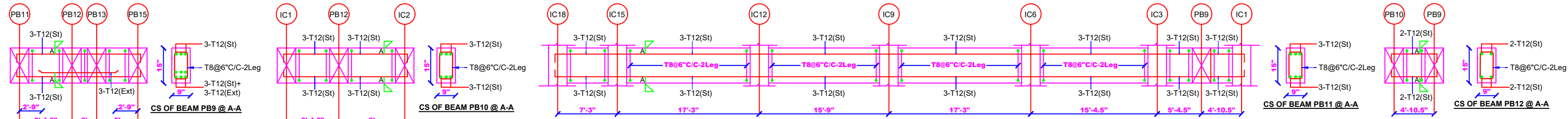
Note: Provide T8@6"C/C-2Leg PB14 - PB18

LS OF BEAM PB7 (9"x15")

Note: Provide T8@6"C/C-2Leg IC6 - IC8

LS OF BEAM PB8 (9"x15")

Note: Provide T8@6"C/C-2Leg IC3 - IC5



LS OF BEAM PB9 (9"x15")

Note: Provide T8@6"C/C-2Leg PB11 - PB15

LS OF BEAM PB10 (9"x15")

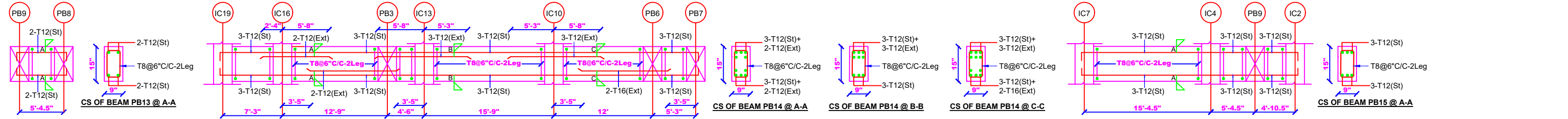
Note: Provide T8@6"C/C-2Leg IC1 - IC2

LS OF BEAM PB11 (9"x15")

Note: Provide T8@6"C/C-2Leg IC18 - IC1

LS OF BEAM PB12 (9"x15")

Note: Provide T8@6"C/C-2Leg PB10 - PB9



LS OF BEAM PB13 (9"x15")

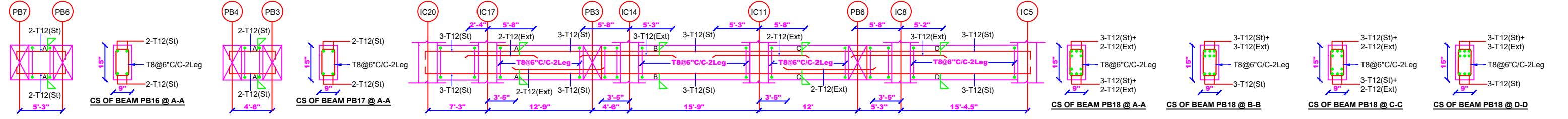
Note: Provide T8@6"C/C-2Leg PB9 - PB8

LS OF BEAM PB14 (9"x15")

Note: Provide T8@6"C/C-2Leg IC19 - PB7

LS OF BEAM PB15 (9"x15")

Note: Provide T8@6"C/C-2Leg IC7 - IC2



LS OF BEAM PB16 (9"x15")

Note: Provide T8@6"C/C-2Leg PB7 - PB6

LS OF BEAM PB17 (9"x15")

Note: Provide T8@6"C/C-2Leg PB4 - PB3

LS OF BEAM PB18 (9"x15")

Note: Provide T8@6"C/C-2Leg IC20 - IC5

LS OF STAIRCASE MID LANDING BEAM (9"x15")

Note: Provide T8@6"C/C-2Leg IC20 - IC17

DATE: 2/9/2023	TITLE: PLINTH BEAM DETAILS	DESIGNED BY: SAAD MOHAMED STRUCTURAL ENGINEER	FIRM: STRUCT SPACE
LEGEND: 'St'- STRAIGHT BAR 'CS': CROSS SECTION 'Ext'- EXTRA BAR 'LS': LONGITUDINAL SECTION		NOTES: CONCRETE: M25 LAP LENGTH: COVER: 30mm (BEAM) STEEL: FE550 COMPRESSION: 45d TENSION: 57d	